

Tread Patterns



N = Smooth



Z = Zig Zag



K = Knobby



R = Ribbed



D = Diamond



B = Bell



T = Turf

Tire Only Part Number Explanation

10-2802504175-BZ

10	Designates tire only
2802504	Tire size: 2.80/2.50-4
175	Designates bead or wheel width = 1.75"
BZ	Black tire - zig zag tread

Tire and Wheel Part Number Explanation

11-2802504-BZ-0225S-58-2PT

11	Designates tire and wheel
2802504	Tire size: 2.80/2.50-4
BZ	Black tire - zig zag tread
0	Off-set hub (if C then center hub)
225	Hub length 2.25"
S	Silver wheel
58	Bearing Size 5/8
2PT	2 piece wheel

Wheels come standard with 5/8" bearing. There may be an additional charge for 1/2" or 3/4".

Why Amerityre?

The most innovative tire technology in the world

Wheelbarrow Test Results |

For years Amerityre® has been saying this is the best tire in the world. We were asked to prove it, so we did.

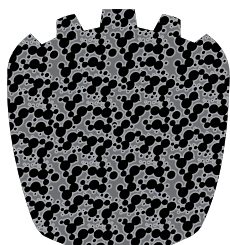
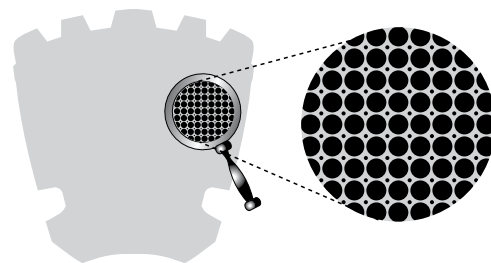
The most popular wheelbarrow tires used today were purchased from a variety of stores and then tested using a Model GSE 250 Load Cell & Indicator with a Peak Hold Indicator to measure the force required to begin rolling and then maintain the forward movement of the wheelbarrow.

The test was repeated three times at each weight to assure the most accurate readings possible. The testing started at 100 pounds and progressed up to 800 pounds in 100-pound increments with the readings being recorded for START, (amount of force needed to start the wheelbarrow moving) and MAINTAIN (the amount of force required to keep the wheelbarrow moving forward). You can see the results of the test below.

	Start	Maintain	Start	Maintain	Start	Maintain	Start	Maintain	Start	Maintain	Start	Maintain	Start	Maintain	Start	Maintain
Pounds in Wheelbarrow	100	100	200	200	300	300	400	400	500	500	600	600	700	700	800	800
Air Tire @30 psi	10	5	12	8	15	12	21	19	27	23	33	29	39	33	47	38
Carefree	10	6	13	11	20	18	28	206	39	36	51	48	64	60	77	75
Marathon	8	6	13	11	21	19	38	36	48	46	60	58	65	56	73	70
True Temper	8	7	12	11	23	20	27	25	40	37	50	47	62	53	77	66
Amerityre Ribbed	5	3	7	5	10	8	14	11	20	16	25	22	33	27	40	34
Amerityre Knobby	4	3	7	5	9	7	15	12	20	18	25	22	30	28	35	32
Amerityre 13"	6	3	9	7	11	10	15	14	21	18	26	23	30	28	35	34
Amerityre Roofer	3	3	7	5	13	11	15	12	18	14	24	19	30	24	35	28
Amerityre 10"Wheel	3	3	10	7	11	9	16	15	20	18	27	25	33	30	37	35

Each Amerityre flat free tire has over 1,000,000 tiny air bubbles and each bubble has the same cushioning air pressure. This unique revolutionary technology not only cushions giving a ride that is very similar to an air tire, but the tires carry the load.

An Amerityre flat free tire is like a room full of very strong balloons, all pressing against each other without collapsing, giving a smooth ride, not absorbing water, and holding the weight.



All other flat free technologies are like a sponge. The cell walls are broken and air fills the spaces of the material. This makes the material soft and weak as if it were made of broken balloons or soft rubbery balls. They absorb water, flat spot, and can't carry the weight because the tire collapses on itself when placed under heavy load.

Application	Tire Size	Page
Hand Truck	2.80/2.50-4	4
Hand Truck	4.10/3.50-4	5-6
Caster	6 x 2.00	7
Hand Truck	4.10/3.50-6	8
Mower	8 x 3.00-4	9
Mower	9 x 3.50-4	10
Mower	9 x 3.50-6	11
Mower	11 x 4.00-5	12
Mower	13 x 5.00-6	13
Mower	13 x 6.50-6	14
Mower	15 x 6.00-6	15
Mower	16 x 6.50-8	16
Wheelbarrow	4.00-8	17
Wheelbarrow	4.80/4.00-8	18 - 19 - 20
Haybaler	4.80/4.00-8	21
Golf Car	18 x 8.50-12	22
Seeder	16 x 4.00	23
Mounting Instructions	—	24
Industrial Wheels	—	26
Bicycle Tires	—	27 - 28
Wheelchair	—	29 - 32

Product Warranty Terms and Conditions:

- Amerityre Corporation warrants its product with a limited lifetime warranty workmanship and materials to the original purchaser and only if they are used in the service for which they are intended. Misapplications, purposeful abuse, overloading and or modification voids warranty.
- Wheels, bearings, and bushings offer a one year warranty. Warranty is voided for misapplication, abuse, scratches, or modification.
- Amerityre makes no express claims of expected tire wear. Variables that effect tire wear include service and soil conditions, as well as load.
- Amerityre will take returns under the following conditions.
 - To return or exchange an item, you must contact us within 15 days of receipt of the item to obtain a Return Authorization Number.
 - If you order the wrong size, Amerityre will exchange it for a new size, however, the customer will be responsible for shipping back your item to the address we provide and you will be charged the freight on the new item.
 - Returns without another equal order will involve a 25% restocking fee.
 - Freight return is customer's responsibility. Product must not have been placed in service and or damaged.

Limitation of Warranty:

This performance Warranty is in lieu of all other warranties, express or implied, including any implied warranty of merchantability or fitness for a particular purpose. The replacement or remedy of repair is the sole and exclusive remedy for Amerityre's obligations arising from the sale of its products. Amerityre will not, under any circumstances, be liable for consequential or incidental loss or damage, including, and without limitation: damage to property, loss of profits, loss of goodwill, or other economic losses, whether such consequential or incidental loss is claimed on account of breach of contract, breach of warranty, negligence, strict liability in tort, or any other legal theory. Goods sold for resale are all subject to the aforementioned terms, and all offers are expressly conditioned upon acceptance of these terms. This writing constitutes the sole and only warranty relating to Amerityre products. Any prior arrangements, promises or representations by Amerityre or its agents which are not expressly set forth in this warranty are of no force or effect.

Hand Truck

2.80/2.50-4

Zig Zag |



Tire Only

Tread	Zig Zag	Zig Zag	Zig Zag	Zig Zag
Bead Width	1.75	1.75	1.50	1.50
Tire Width	2.70	2.70	2.70	2.70
Outer Diam.	8.75	8.75	8.75	8.75
Tire Color	Black	Gray	Black	Gray
Load Rating	270	270	270	270
Wheel	2 Piece	2 Piece	2 Piece	2 Piece
Tire Weight	2.10	2.10	2.10	2.10
Tire Part #	10-2802504175-BZ	10-2802504175-GZ	10-2802504150-BZ	10-2802504150-GZ

Sold as tire only

Sold as tire only

Tire Wheel Assembly

Wheel	Hub Length	Hub Type	Bearing	Wheel Color	Tire Color	Tread	Assem. Wt.	Tire and Wheel Part #
4"	2.25	Off-set	5/8	White	Black	Zig Zag	3.40	11-2802504-BZ-0225-58
4"	3.00	Center	5/8	White	Black	Zig Zag	3.40	11-2802504-BZ-C300-58
4"	3.00	Center	1/2	White	Black	Zig Zag	3.40	11-2802504-BZ-C300-12
4"	2.25	Off-set	5/8	White	Gray	Zig Zag	3.40	11-2802504-GZ-0225-58
4"	3.00	Center	5/8	White	Gray	Zig Zag	3.40	11-2802504-GZ-C300-58
4"	3.00	Center	1/2	White	Gray	Zig Zag	3.40	11-2802504-GZ-C300-12

Hand Truck

4.10/3.50-4

Zig Zag | Diamond



Tire Only

Tread	Zig Zag	Zig Zag	Diamond	Diamond	Zig Zag
Bead Width	2.50	2.50	2.00	2.35	2.50
Tire Width	3.25	3.25	3.10	3.10	3.25
Outer Diam.	9.75	9.75	10.00	10.00	9.75
Tire Color	Black	Black	Black	Black	Black
Load Rating	300	300	300	300	200
Wheel	1 Piece	2 Piece	2 Piece	2 Piece	2 Piece
Tire Weight	3.65	3.60	3.00	3.00	2.75
Tire Part #	10-4103504250-BZ	10-4103504250-BZ-2PT	10-4103004200-BD	10-4103004235-BD	10-4103504250-BZ-LT

Sold as tire only

Sold as tire only

Sold as tire only

Tire Wheel Assembly

Wheel	Hub Length	Hub Type	Bearing	Wheel Color	Tire Color	Tread	Assem. Wt.	Tire and Wheel Part #
4"	2.25	Off-set	5/8	White	Black	Zig Zag	4.80	11-4103504-BZ-0225-58
4"	2.25	Off-set	3/4	White	Black	Zig Zag	4.80	11-4103504-BZ-0225-34
4"	3.25	Off-set	3/4	White	Black	Zig Zag	3.85	11-4103504-BZ-0325-34-LT
4"	2.25	Off-set	5/8	White	Black	Zig Zag	3.85	11-4103504-BZ-0225-58-LT
4"	2.50	Center	5/8	Silver	Black	Zig Zag	4.75	11-4103504-BZ-C250S-58
4"	3.25	Center	5/8	White	Black	Zig Zag	4.75	11-4103504-BZ-C325-58
4"	4.00	Center	5/8	White	Black	Zig Zag	4.75	11-4103504-BZ-C400-58
4"	4.00	Center	1/2	White	Black	Zig Zag	4.75	11-4103504-BZ-C400-12
4"	3.25	Center	3/4	White	Black	Zig Zag	4.75	11-4103504-BZ-C325-34
4"	3.25	Center	1/2	White	Black	Zig Zag	4.75	11-4103504-BZ-C325-12

Hand Truck

4.10/3.50-4

Ribbed | Smooth | Bell



Tire Only

Tread	Ribbed	Smooth	Ribbed	Bell
Bead Width	2.50	2.50	2.50	2.70
Tire Width	3.25	3.25	3.25	3.10
Outer Diam.	9.75	9.75	9.75	9.70
Tire Color	Black	Black	Black	Black
Load Rating	300	300	300	300
Wheel	1 Piece	1 Piece	2 Piece	2 Piece
Tire Weight	3.40	4.00	3.40	3.10
Tire Part #	10-4103504250-BR	10-4103504250-BN	10-4103504250-BR-2PT	10-4103504270-BB

Sold as tire only

Sold as tire only

Tire Wheel Assembly

Wheel	Hub Length	Hub Type	Bearing	Wheel Color	Tire Color	Tread	Assem. Wt.	Tire and Wheel Part #
4"	2.25	Off-set	5/8	White	Black	Ribbed	4.80	11-4103504-BR-0225-58
4"	3.25	Off-set	5/8	White	Black	Ribbed	4.80	11-4103504-BR-0325-58
4"	2.50	Center	5/8	Silver	Black	Ribbed	4.80	11-4103504-BR-C250S-58
4"	4.00	Center	5/8	White	Black	Ribbed	5.10	11-4103504-BR-C400-58
4"	4.00	Center	3/4	White	Black	Ribbed	5.10	11-4103504-BR-C400-34
4"	2.25	Off-set	5/8	White	Black	Smooth	4.80	11-4103504-BN-0225-58
4"	3.25	Center	5/8	White	Black	Smooth	4.80	11-4103504-BN-C325-58
4"	2.50	Center	5/8	Silver	Black	Smooth	4.80	11-4103504-BN-C250S-58
4"	4.00	Center	5/8	White	Black	Smooth	5.10	11-4103504-BN-C400-58

Caster

6 x 2.00

| Turf



Tire Only

Tread	Lug
Bead Width	1.50
Tire Width	2.00
Outer Diam.	6.00
Tire Color	Black
Load Rating	110
Wheel	2 Piece
Tire Weight	0.55
Tire Part #	10-06200150-BL

Tire Wheel Assembly

Wheel	Hub Length	Hub Type	Bearing	Wheel Color	Tire Color	Tread	Assem. Wt.	Tire and Wheel Part #
4	2.00	Center	5/8	White	Black	Lug	1.50	11-06200-BL-C200-58
4	2.25	Off-set	5/8	White	Black	Lug	1.50	11-06200-BL-0225-58

Hand Truck

4.10/3.50-6

Zig Zag |



Tire Only

Tread	Zig Zag	Zig Zag	Zig Zag
Bead Width	2.50	3.25	3.25
Tire Width	2.75	4.00	4.00
Outer Diam.	10.00	13.00	13.00
Tire Color	Black	Black	Black
Load Rating	250	450	450
Wheel	1 Piece Plastic	Steel 1 Piece	Steel 2 Piece
Tire Weight	2.00	7.20	7.20
Tire Part #	10-4103506250-BZ	10-4103506325-BZ	10-4103506325-BZ-2PT
		Sold as tire only	Sold as tire only

Tire Wheel Assembly

Wheel	Hub Length	Hub Type	Bearing	Wheel Color	Tire Color	Tread	Assem. Wt.	Tire and Wheel Part #
6"	2.25	Off-set	5/8	Gray Plastic	Black	Zig Zag	2.90	11-4103506-BZ-0225-58

Mower

8 x 3.00-4

| Smooth



Tire Only

Tread	Smooth	Smooth	Smooth
Bead Width	2.50	2.50	2.25
Tire Width	3.00	3.00	3.00
Outer Diam.	7.65	7.65	7.65
Tire Color	Black	Black	Black
Load Rating	250	250	250
Wheel	1 Piece	2 Piece	1 Piece
Tire Weight	2.00	2.00	2.00
Tire Part #	10-83004250-BN	10-83004250-BN-2PT	10-83004225-BN
		Sold as tire only	Sold as tire only

Tire Wheel Assembly

Wheel	Hub Length	Hub Type	Bearing	Wheel Color	Tire Color	Tread	Assem. Wt.	Tire and Wheel Part #
4"	2.25	Off-set	5/8	White	Black	Smooth	3.20	11-83004-BN-0225-58
4"	3.25	Off-set	5/8	White	Black	Smooth	3.20	11-83004-BN-0325-58
4"	3.25	Center	5/8	White	Black	Smooth	3.20	11-83004-BN-C325-58
4"	4.00	Center	5/8	White	Black	Smooth	3.20	11-83004-BN-C400-58
4"	2.50	Center	5/8	Silver	Black	Smooth	3.20	11-83004-BN-C250S-58
4"	4.00	Center	5/8	Silver	Black	Smooth	3.20	11-83004-BN-C400S-58

Mower

9 x 3.50-4

Smooth | Turf



Tire Only

Tread	Smooth	Smooth	Smooth	Turf	Turf
Bead Width	2.50	2.75	3.00	2.50	3.30
Tire Width	4.00	3.35	3.65	4.00	3.90
Outer Diam.	8.50	8.90	8.75	8.50	8.60
Tire Color	Black	Black	Black	Black	Black
Load Rating	250	250	250	250	250
Wheel	1 Piece/2 Piece*	2 Piece	2 Piece	2 Piece	2 Piece
Tire Weight	2.80	2.90	2.95	2.50	2.75
Tire Part #	10-93504250-BN	10-93504275-BN	10-93504300-BN	10-93504250-BT	10-93504330-BT
	10-93504250-BN-2PT*	Sold as tire only	Sold as tire only		Sold as tire only

Tire Wheel Assembly

Wheel	Hub Length	Hub Type	Bearing	Wheel Color	Tire Color	Tread	Assem. Wt.	Tire and Wheel Part #
4"	2.25	Off-set	5/8	White	Black	Smooth	4.00	11-93504-BN-0225-58
4"	3.25	Off-set	5/8	White	Black	Smooth	4.00	11-93504-BN-0325-58
4"	3.25	Center	5/8	White	Black	Smooth	4.00	11-93504-BN-C325-58
4"	4.00	Center	5/8	White	Black	Smooth	4.00	11-93504-BN-C400-58
4"	2.50	Center	5/8	Silver	Black	Smooth	4.00	11-93504-BN-C250S-58
4"	4.00	Center	5/8	Silver	Black	Smooth	4.00	11-93504-BN-C400S-58
4"	2.25	Off-set	5/8	White	Black	Turf	4.00	11-93504-BT-0225-58
4"	3.25	Off-set	5/8	White	Black	Turf	4.00	11-93504-BT-0325-58
4"	3.25	Center	5/8	White	Black	Turf	4.00	11-93504-BT-C325-58
4"	4.00	Center	5/8	White	Black	Turf	4.00	11-93504-BT-C400-58
4"	2.50	Center	5/8	Silver	Black	Turf	4.00	11-93504-BT-C250S-58
4"	4.00	Center	5/8	Silver	Black	Turf	4.00	11-93504-BT-C400S-58

Mower
9 x 3.50-6
| Smooth



Tire Only

Tread	Smooth
Bead Width	3.30
Tire Width	4.10
Outer Diam.	10.00
Tire Color	Black
Load Rating	300
Wheel	2 Piece
Tire Weight	3.30
Tire Part #	10-93506330-BN

Sold as tire only

Mower

11 x 4.00-5

Ribbed | Smooth | Turf



Tire Only

Tread	Ribbed	Smooth	Turf
Bead Width	3.00	3.00	2.50 Bevco
Tire Width	4.00	4.00	4.00
Outer Diam.	10.50	10.50	10.50
Tire Color	Black	Black	Black
Load Rating	340	340	340
Wheel	1 Piece	1 Piece	1 Piece
Tire Weight	4.50	4.50	4.50
Tire Part #	10-114005300-BR	10-114005300-BN	10-114005250-BT

Sold as tire only

Tire Wheel Assembly

Wheel	Hub Length	Hub Type	Bearing	Wheel Color	Tire Color	Tread	Assem. Wt.	Tire and Wheel Part #
5"	3.25	Center	3/4	White	Black	Ribbed	7.00	11-114005-BR-C325-34
5"	5.00	Center	3/4	White	Black	Ribbed	7.15	11-114005-BR-C500-34
5"	3.25	Center	3/4	White	Black	Smooth	7.10	11-114005-BN-C325-34
5"	5.00	Center	3/4	White	Black	Smooth	7.25	11-114005-BN-C500-34

Mower

13 x 5.00-6

Turf | Smooth | Ribbed



Tire Only

Tread	Turf	Smooth	Ribbed
Bead Width	3.25	3.25	3.40
Tire Width	5.00	5.00	4.30
Outer Diam.	13.00	13.00	12.45
Tire Color	Black	Black	Black
Load Rating	285	285	285
Wheel	1 Piece	1 Piece	2 Piece
Tire Weight	7.30	7.30	7.30
Tire Part #	10-135006325-BT	10-135006325-BN	10-135006340-BR

Sold as tire only

Tire Wheel Assembly

Wheel	Hub Length	Hub Type	Bearing	Wheel Color	Tire Color	Tread	Assem. Wt.	Tire and Wheel Part #
6"	6.00	Center	3/4	White	Black	Turf	10.80	11-135006-BT-C600-34
6"	3.25	Center	3/4	White	Black	Smooth	10.95	11-135006-BN-C325-34

Mower

13 x 6.50-6

Smooth |



Tire Only

Tread	Smooth
Bead Width	4.50
Tire Width	6.00
Outer Diam.	12.75
Tire Color	Black
Load Rating	305
Wheel	1 Piece
Tire Weight	9.80
Tire Part #	10-136506450-BN

Tire Wheel Assembly

Wheel	Hub Length	Hub Type	Bearing	Wheel Color	Tire Color	Tread	Assem. Wt.	Tire and Wheel Part #
6"	3.00	Center	3/4	White	Black	Smooth	12.20	11-136506-BN-C300-34

Mower

15 x 6.00-6

| Turf



Tire Only

Tread	Turf
Bead Width	4.50
Tire Width	6.00
Outer Diam.	14.50
Tire Color	Black
Load Rating	360
Wheel	1 Piece
Tire Weight	13.50
Tire Part #	10-156006450-BT

Tire Wheel Assembly

Wheel	Hub Length	Hub Type	Bearing	Wheel Color	Tire Color	Tread	Assem. Wt.	Tire and Wheel Part #
6"	3.00	Center	3/4	White	Black	Turf	15.85	11-156006-BT-C300-34

Mower

16 x 6.50-8

Turf |



Tire Only

Tread	Turf
Bead Width	5.375
Tire Width	6.50
Outer Diam.	16.00
Tire Color	Black
Load Rating	380
Wheel	1 Piece
Tire Weight	14.60
Tire Part #	10-166508537-BT

Sold as tire only

Wheelbarrow

4.00-8

| Ribbed



Tire Only

Tread	Ribbed	Ribbed
Bead Width	2.50	2.50
Tire Width	3.00	3.00
Outer Diam.	13.00	13.00
Tire Color	Black	Black
Load Rating	500	250
Wheel	1 Piece	1 Piece
Tire Weight	4.30	3.10
Tire Part #	10-4008250-BR	10-4008250-BR-LT

Tire Wheel Assembly

Wheel	Hub Length	Hub Type	Bearing	Wheel Color	Tire Color	Tread	Assem. Wt.	Tire and Wheel Part #
8"	6.00	Center	5/8	White	Black	Ribbed	7.45	11-4008-BR-C600-58
8"	3.00	Center	3/4	White	Black	Ribbed	7.20	11-4008-BR-C300-34
8"	4.00	Center	5/8	White	Black	Ribbed	7.45	11-4008-BR-C400-58
8"	3.00	Center	3/4	White	Black	Ribbed	6.25	11-4008-BR-C300-34-LT
8"	4.00	Center	5/8	White	Black	Ribbed	6.25	11-4008-BR-C600-58-LT

Wheelbarrow

4.80/4.00-8

Smooth Roofer's |



Tire Only

Tread	Smooth
Bead Width	2.50
Tire Width	3.38
Outer Diam.	16.00
Tire Color	Black
Load Rating	1000
Wheel	1 Piece
Tire Weight	7.30
Tire Part #	10-4804008250-BN

Tire Wheel Assembly

Wheel	Hub Length	Hub Type	Bearing	Wheel Color	Tire Color	Tread	Assem. Wt.	Tire and Wheel Part #
8"	6.00	Center	5/8	White	Black	Smooth	10.40	11-4804008-BN-C600-58
8"	6.00	Center	3/4	White	Black	Smooth	10.40	11-4804008-BN-C600-34
8"	6.00	Center	1/2	White	Black	Smooth	10.40	11-4804008-BN-C600-12
8"	3.00	Center	3/4	White	Black	Smooth	10.40	11-4804008-BN-C300-34
8"	4.00	Center	3/4	White	Black	Smooth	10.40	11-4804008-BN-C400-34
8"	6.00	Center	1" Bushing	White	Black	Smooth	10.40	11-4804008-BN-C600-1

Wheelbarrow

4.80/4.00-8

Ribbed | Knobby



Tire Only

Tread	Ribbed	Ribbed	Knobby	Knobby
Bead Width	2.50	2.50	2.50	2.50
Tire Width	3.38	3.38	3.90	3.90
Outer Diam.	15.00	15.00	15.00	15.00
Tire Color	Black	Black	Black	Black
Load Rating	1000	500	1000	500
Wheel	1 Piece	1 Piece	1 Piece	1 Piece
Tire Weight	6.80	5.20	7.20	5.60
Tire Part #	10-4804008250-BR	10-4804008250-BR-LT	10-4804008250-BK	10-4804008250-BK LT

Tire Wheel Assembly

Wheel	Hub Length	Hub Type	Bearing	Wheel Color	Tire Color	Tread	Assem. Wt.	Tire and Wheel Part #
8"	6.00	Center	5/8	White	Black	Ribbed	9.95	11-4804008-BR-C600-58
8"	6.00	Center	3/4	White	Black	Ribbed	9.95	11-4804008-BR-C600-34
8"	6.00	Center	1/2	White	Black	Ribbed	9.95	11-4804008-BR-C600-12
8"	3.00	Center	3/4	White	Black	Ribbed	9.95	11-4804008-BR-C300-34
8"	4.00	Center	3/4	White	Black	Ribbed	9.95	11-4804008-BR-C400-34
8"	6.00	Center	5/8	White	Black	Ribbed	8.05	11-4804008-BR-C600-58-LT
8"	6.00	Center	5/8	White	Black	Knobby	8.75	11-4804008-BK-C600-58-LT
8"	6.00	Center	5/8	White	Black	Knobby	10.40	11-4804008-BK-C600-58
8"	3.00	Center	5/8	White	Black	Knobby	10.20	11-4804008-BK-C300-58
8"	4.00	Center	5/8	White	Black	Knobby	10.40	11-4804008-BK-C400-58

Wheelbarrow

4.80/4.00-10

Ribbed |



Tire Only

Tread	Ribbed
Bead Width	2.50
Tire Width	3.00
Outer Diam.	15.00
Tire Color	Black
Load Rating	500
Wheel	1 Piece
Tire Weight	4.50
Tire Part #	10-48040010250-BR

Tire Wheel Assembly

Wheel	Hub Length	Hub Type	Bearing	Wheel Color	Tire Color	Tread	Assem. Wt.	Tire and Wheel Part #
8"	6.00	Center	5/8	White	Black	Ribbed	8.40	11-48040010-BR-C600-58
8"	3.00	Center	3/4	White	Black	Ribbed	8.10	11-48040010-BR-C300-34

Haybaler

4.80/4.00-8

| Smooth



Tire Only

Tread	Smooth
Bead Width	3.75
Tire Width	5.20
Outer Diam.	16.00
Tire Color	Black
Load Rating	600
Wheel	1 Piece
Tire Weight	12.00
Tire Part #	10-4804008375-BN

Sold as tire only

Golf Car

18 x 8.50-12

Ribbed | Turf



Tire Only

Tread	Ribbed	Turf
Bead Width	8.75	8.75
Tire Width	8.40	8.40
Outer Diam.	17.70	17.70
Tire Color	Black	Black
Load Rating	600	600
Wheel	1 Piece	1 Piece
Tire Weight	23.70	23.50
Tire Part #	10-1885012875-BR	10-1885012875-BT
	Heavy Duty	Heavy Duty

Tire Wheel Assembly

Wheel	Hub Type	Duty	Wheel Color	Tire Color	Tread	Assem. Wt.	Tire and Wheel Part #
12"	5 on 4.5	Heavy Duty	White	Black	Ribbed	35.95	11-1885012-BR-12W-545
12"	4 on 4	Heavy Duty	White	Black	Ribbed	35.95	11-1885012-BR-12W-44
12"	5 on 4.5	Heavy Duty	White	Black	Turf	35.75	11-1885012-BT-12W-545
12"	4 on 4	Heavy Duty	White	Black	Turf	35.75	11-1885012-BT-12W-44

Seeder
16 x 4.00

| Smooth with lip



Tire Only

Tread	Smooth with lip
Bead Width	12.25
Tire Width	4.38
Outer Diam.	14.75
Tire Color	Black
Load Rating	500
Wheel	2 Piece
Tire Weight	11.40
Tire Part #	10-416-72 (72 Durometer)
Tire Part #	10-416-80 (80 Durometer)
Tire Part #	10-416-90 (90 Durometer)

Sold as tire only

Mounting Instructions

1 Piece Wheel

Bearings | Mounting Cones

In order to mount the Amerityre flat free tires you will need access to a hydraulic press – it doesn't have to be a big one, a simple ten ton press works just fine. You will need a good base – in most cases the plates that come with your press will work well. The base just needs to be a flat surface that will support the rim and has a hole in the center for a shaft or hub to go through if needed. Amerityre has these mounting cones for wheels measuring 4, 5, 6, 8, or 10 inches in diameter.

Place the rim on the base with the valve stem hole up. This side of the rim will sometimes have a little different angle than the other side, and the tire will slide over the valve stem hole side easier than the other side. Center the wheel under the press and place the mounting cone on top of the wheel with the shaft going through the center of the mounting cone. Make sure there is enough room in the center of the mounting cone for the shaft to slip into. If the shaft is too tight, shave out a little of the cone so the wheel shaft will easily slide into the cone. This can be done with a hole saw, knife or any tool that will cut away a small amount of the center hole. If the cone is too tight, when pressing, all the pressure goes onto the shaft and may collapse the wheel.

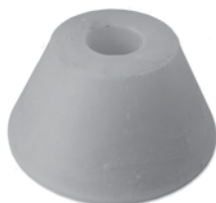
Now place the tire to be mounted onto the mounting cone. It's very important at this point that you create some space to allow the press to drive the tire all the way over the cone and onto the wheel. You can create this space by placing another tire on top of the first tire, our preferred method, or by making a small square using a 2x4 box made to sit on top of the tire being pressed. Make sure the box is wide enough to allow the wood to press down past the cone and not get hung up on the cone as the tire depresses onto the wheel. Place this on top of the tire and place a steel plate on top of the second tire or 2x4 box to assure even pressure. If you don't have this space, you will press the tire down until it presses on the cone and not the tire and if you keep pressing the wheel will collapse under the pressure.

Make sure you have everything centered and level then begin pumping and driving the tire over the cone and onto the wheel. As the tire snaps onto the rim continue pressing just a little more to make sure the top bead slips down into the wheel and centers itself. Release the pressure and the press will retract. Pick the tire up and make sure it is seated on both sides. If one side seems to be out, bounce the tire on the floor a few times and most often the tire will seat itself, if not replace on the press and press again until both sides are on the wheel.

Now you have a perfectly mounted tire that will never go flat and a customer that will always look to you to solve their flat tire problems.

Mounting Cones

Size	Weight	Part #
4"	1.60	33-P&A-00003
5"	1.90	33-P&A-00004
6"	3.10	33-P&A-00005
8"	7.10	33-P&A-00006
10"	11.50	33-P&A-00007



Bearings for Wheelbarrow & Handtruck

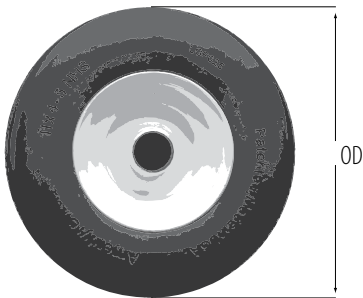
Size	Part #
1/2"	30-BRG-00001
5/8"	30-BRG-00002
3/4"	30-BRG-00003



Measurements

Parts and Tools

Hubs | Bearings | Measurements

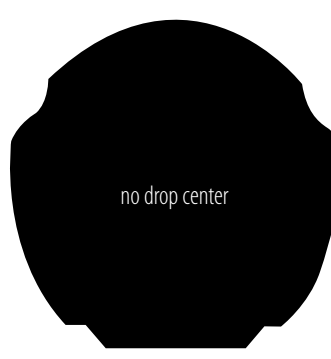
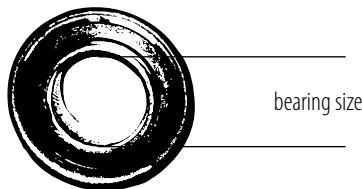


OD

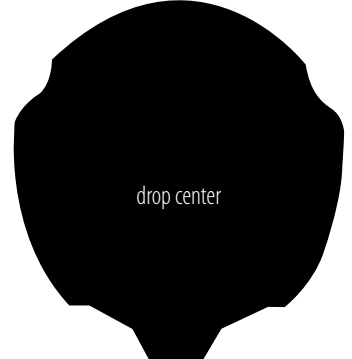
This is the outside diameter of the tire measured from side to side or top to bottom.

Bearing size

This is the measurement where the axle passes through the bearing, usually 5/8 or 3/4.



no drop center



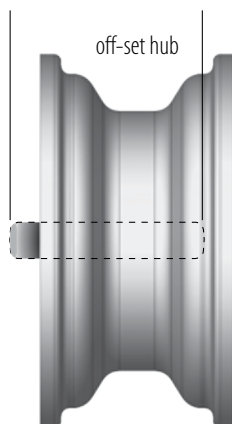
drop center

No drop center tires

Tires with no drop center, which are flat across the bottom or inside of the tire, are designed for two-piece wheels. These tires will mount much easier on a two-piece wheel because there is no drop center to interfere with the two-piece wheel which in most cases will not have a drop center for the tire.

Drop center tires

Tires with a drop center are used for one-piece wheels. The drop center, or section that extends down into the wheel well, is designed to keep the tire from rolling off the rim should the tire strike a curb or some object.



Center hub

A wheel with the same amount of hub on each side of the wheel, to measure the hub length you could insert a pencil through the bearing holes, cut the pencil off at the bearings and this would be the hub length.

Off-set hub

This is the opposite of a center hub which has the same hub length on each side. The off-set wheel has two different hub lengths and the off-set can vary from wheel to wheel. One side will be longer with the other side quite often being flush or very close to flush with the wheel. You measure hub length the same way as a centered hub.

Bike Tires

1 Piece Wheel

All-terrain | Bell | Lug | Mountain

Tread Patterns



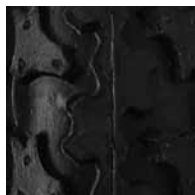
All-terrain



Bell



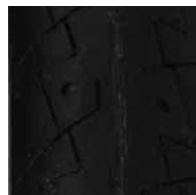
Lug



Mountain



Ocelot



Street



Uni-Dir

Bike Tires Size	New Part #	Rim Size	Tread	Color	Recommendation
700 x 25	10-70025-BS	12.5 -14 mm	Street	Black	Racing & Recreation
700 x 35	10-70035-BA	18-20 mm	All-Terrain	Black	Recreation & Industrial
28 x 1.50	10-28150-BR	22-25 mm	Street	Black	Recreation & Industrial
26 x 1.90	10-26190-BOL	23-27 mm	Low P Ocelot	Black	Recreation & Industrial
26 x 1.90	10-26190-BU	20-24 mm	Uni-Dir	Black	Recreation & Industrial
26 x 1.50	10-26150-BB	23-26 mm	Bell	Black	Recreation & Industrial
26 x 2.00	10-26200-BA	29-31 mm	All-Terrain	Black	Recreation & Industrial
26 x 1.95	10-26195-BM	23-26 mm	Mountain	Black	Recreation & Industrial
26 x 1.95	10-24195-BA	23-26 mm	All-Terrain	Black	Recreation & Industrial
26 x 1.50	10-26150-BM	18-20 mm	Mountain	Black	Recreation & Industrial
26 x 1.50	10-26150-BS	18-20 mm	Street	Black	Recreation & Industrial
24 x 1.95	10-24195-BM	23-26 mm	Mountain	Black	Recreation & Industrial
24 x 1.95	10-24195-BA	23-26 mm	All-Terrain	Black	Recreation & Industrial
24 x 1.50	10-24150-BM	18-20 mm	Mountain	Black	Recreation & Industrial
24 x 1.50	10-24150-BS	18-20 mm	Street	Black	Recreation & Industrial
24 x 1.30	10-24130-BS	23-26 mm	Street	Black	Recreation & Industrial

Bike Tires

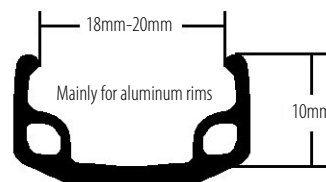
1 Piece Wheel

Ocelot | Street | Uni-Dir

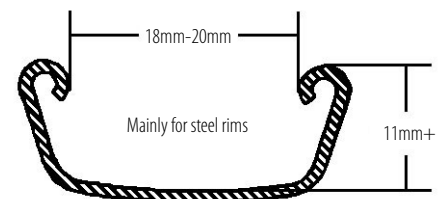
Bike Tires Size	New Part #	Rim Size	Tread	Color	Recommendation
20 x 2.00	10-20200-BA	29-31 mm	All-Terrain	Black	Industrial, Recreation & Pony Carts
20 x 1.95	10-20195-BM	23-26 mm	Mountain	Black	Kids Bikes & Industrial
20 x 1.95	10-20195-BA	23-26 mm	All-Terrain	Black	Kids Bikes & Industrial
20 x 1.50	10-20150-BM	18-20 mm	Mountain	Black	Kids Bikes & Industrial
20 x 1.50	10-20150-BS	18-20 mm	Street	Black	Kids Bikes & Industrial
20 x 1.30	10-20130-BS	23-26 mm	Street	Black	Kids Bikes & Industrial
20 x 1.75	10-20175-BL	29-32 mm	Lug	Black	Kids Bikes & Industrial
16 x 2.00	10-16200103-BB	24-26 mm	Bell	Black	Kids Bikes & Baby Joggers
16 x 1.95	10-16195-BM	23-26 mm	Mountain	Black	Kids Bikes & Baby Joggers
16 x 1.50	10-16150-BM	18-20 mm	Mountain	Black	Kids Bikes & Baby Joggers
16 x 1.50	10-16150-BS	18-20 mm	Street	Black	Kids Bikes & Baby Joggers
16 x 1.30	10-16130-BS	23-26 mm	Street	Black	Kids Bikes & Baby Joggers
12.5 x 2.25	10-1252251820-BM	18-20 mm	Mountain	Black	Scooters & Small Bikes
12.5 x 2.25	10-1252251820-BA	18-20 mm	All-Terrain	Black	Scooters & Small Bikes
12.5 x 2.25	10-125225093-BA	Plastic rims 24-26 mm	All-Terrain	Black	Scooters & Small Bikes
Inserts					
12 x 1.75	10-125175 Insert	Fits 2.25" tire	None	Black	Inserts
20 x 2.125	10-202125 Insert	Fits 2.125" tire	None	Black	Inserts
24 x 1.375	10-241375 Insert	Fits 1.375" tire	None	Black	Inserts



Bicycle inserts 12 x 2.25 and 20 x 2.125



18mm-20mm is equal to
Amerityre's 1.50 series



23mm-26mm is equal to
Amerityre's 1.95 series

18 mm = 11/16" 20 mm = 3/4" 23 mm = 7/8" 26 mm = 1"

Heavy Duty

Industrial Wheels

Drop Center | 3 Piece

Wheel Diameter	Bead Width	Hub Length	Actual Tube Length	Hub Type		Heavy Duty	Lighter Duty		Standard B Bearings			Precision B Bearings			Caged Roller Bearings		
									1/2	5/8	3/4	1/2	5/8	3/4	5/8	3/4	1

Drop Center Welded Wheels (DCW)

4"	2.50	2.25	2.00	Offset													
		3.25	3.00	Centered													
		4.00	3.75	Centered													

3 Piece Bolt Together (3P)

4"	2.50	2.25	2.00	Offset													
		3.25	3.00	Centered													
		4.00	3.75	Centered													
5"	2.50	2.25	2.00	Offset													
		3.25	3.00	Centered													
		4.00	3.75	Centered													
5"	3.00	2.25	2.00	Offset													
		3.25	3.00	Centered													
		5.00	4.75	Centered													
5"	3.25	6.00	5.75	Centered													
		4.50	2.75	Centered													

Drop Center Welded Wheels (DCW)

8"	2.50	3.00	2.75	Offset													
		4.00	3.75	Centered													
		6.00	5.75	Centered													
10"	2.50	3.00	2.75	Centered													

Wheelchair

Bell | Ribbed | Lug | Smooth



Item Number	Mold Description	Tire OD	Tire Width	BW Inches	BW MM	Treads	Wheel Fit	Application	Color
10-6125069-BR	06-1.25 B	5.54	1.06	0.69	17.50	Bell	Standard	Small Caster	Black
10-6125078-BR	06-1.25 RR	5.84	1.18	0.69	17.50	Ribbed	Standard	Small Caster	Black
10-618109-BR	06-1.8 R	5.94	1.77	1.09	27.70	Ribbed	Standard	Small Caster	Black
10-06200150-BL	06-2.00 L	5.75	1.86	1.50	38.10	Lug	Standard	Small Caster	Black
10-06200123-BR	06-2.00 R	6.02	1.95	1.23	31.30	Ribbed	Standard	Small Caster	Black



Item Number	Mold Description	Tire OD	Tire Width	BW Inches	BW MM	Treads	Wheel Fit	Application	Color
10-08078081-BP	08-078 P	7.45	0.97	0.81	20.60	Smooth	Standard	Medium Caster	Black
10-08125080-BP	08-1.25 P	7.60	1.09	0.80	20.20	Smooth	Standard	Medium Caster	Black
10-08125059-BR	08-1.25 R	7.57	1.25	0.59	15.00	Ribbed	Standard	Medium Caster	Black
10-08150067-BC	08-1.50 C	7.44	1.53	0.67	17.00	Smooth	Standard	Medium Caster	Black
10-08175055-BC	08-1.75 C	7.52	1.39	0.55	14.00	Smooth	Standard	Medium Caster	Black
10-08175098-BR	08-1.75 R	7.75	1.60	0.98	25.00	Ribbed	Standard	Medium Caster	Black
10-08100062-BF	08-100 F	7.38	1.00	0.62	15.60	Smooth	Standard	Medium Caster	Black
10-08100073-BP	08-100 P	7.49	1.07	0.73	18.60	Smooth	Standard	Medium Caster	Black

All tires are non-marking. Available in black or gray.

Wheelchair

Smooth | Ribbed | Zipper



Item Number	Mold Description	Tire OD	Tire Width	BW Inches	BW MM	Treads	Wheel Fit	Application	Color
10-07250200-BN	07/2.50-4 N	6.45	2.49	2.03	51.50	Smooth	Standard	Small Caster	Black
10-07125080-BF	07-1.25 F	7.26	1.19	0.80	20.30	Smooth	Standard	Small Caster	Black
10-07175113-BR-2	07-1.75 (HR)	7.00	1.68	1.13	33.30	Ribbed	Standard	Small Caster	Black
10-07175113-BR	07-1.75 R	7.00	1.68	1.13	33.30	Ribbed	Standard	Small Caster	Black
10-07100082-BR	07-100 R	6.25	1.12	0.82	21.00	Ribbed	Standard	Small Caster	Black
10-07200162-BH	07-2.00 H	6.83	1.87	1.62	41.20	Smooth	Standard	Small Caster	Black
10-75200123-BR	075-2.00 RI	7.51	1.92	1.23	31.30	Ribbed	Standard	Small Caster	Black



Item Number	Mold Description	Tire OD	Tire Width	BW Inches	BW MM	Treads	Wheel Fit	Application	Color
10-17545127-BN	175-45	6.91	1.58	1.27	32.10	Smooth	Standard	Medium Caster	Black
10-2503140-BR-1	2.50-3	8.25	2.25	1.40	35.70	Ribbed	Roltec	Medium Caster	Black
10-2503140-BR-2	2.50-3	8.25	2.25	1.40	35.70	Ribbed	Permobil	Medium Caster	Black
10-26085240-BZ	2.60x85-(300-4)	10.00	2.75	2.40	61.00	Zipper	Standard	Medium Caster	Black
10-20050140-BR	200 x 50	8.25	2.25	1.40	35.70	Ribbed	Standard	Medium Caster	Black
10-20050117-BN	200-50 N	7.43	1.75	1.17	29.70	Smooth	Standard	Medium Caster	Black

All tires are non-marking. Available in black or gray.

Wheelchair

Zipper | Ribbed | Lug | Button



Item Number	Mold Description	Tire OD	Tire Width	BW Inches	BW MM	Treads	Wheel Fit	Application	Color
10-125225130-BZ	12.5 x 2.25	12.00	2.25	1.26-1.34	32-34	Zipper	Standard	Medium Caster	Black
10-125225100-BZ	12.5 x 2.25	12.00	2.25	1.00-1.10	26-28	Zipper	Standard	Medium Caster	Black
10-125225150-BZ	12.5 x 2.25	12.00	2.25	1.50-1.60	40-42	Zipper	Standard	Medium Caster	Black



Item Number	Mold Description	Tire OD	Tire Width	BW Inches	BW MM	Treads	Wheel Fit	Application	Color
10-08200130-BR	08-2.00 R	8.00	2.03	1.30	33.00	Ribbed	Standard	Medium Caster	Black
10-08225196-BL	08-2.25 L	8.06	2.19	1.96	49.80	Lug	Standard	Medium Caster	Black



Item Number	Mold Description	Tire OD	Tire Width	BW Inches	BW MM	Treads	Wheel Fit	Application	Color
10-3004210-BZ	3.00-4	10.30	2.80	2.10	53.50	Zipper	Meyra	Medium Caster	Black
10-3008170-BB	3.00-8	13.25	2.60	1.70	43.20	Button	Meyra	Medium Caster	Black
10-3008220-BB	3.00-8	13.30	2.90	2.20	55.80	Button	Mini Crosser	Medium Caster	Black
10-93504213-BB	9x350-4	8.60	2.60	2.13	53.90	Button	Golden	Medium Caster	Black
10-75200141-BR	AAN075-2.00 R	7.29	1.92	1.41	35.70	Ribbed	Split Rim	Medium Caster	Black

All tires are non-marking. Available in black or gray.

Wheelchair

Knobby | Smooth | Diamond



Item Number	Mold Description	Tire OD	Tire Width	BW Inches	BW MM	Treads	Wheel Fit	Application	Color
10-20138084-BK	F 20-138 K	19.68	1.25	0.84	21.40	Knobby	Sun	Large Wheel	Black
10-2210085-BP	H 22-100 P	22.00	1.13	0.85	21.60	Smooth	Sun	Large Wheel	Black
10-22138087-BK	H 22-138 K	22.00	1.26	0.87	22.20	Knobby	Sun	Large Wheel	Black
10-2407818-BMNN	NN 24-078 M (18) w/ Nylon	24.00	0.93	0.70	18.00	Smooth	540 Spinerger	Large Wheel	Black
10-2407820-BMNN	NN 24-078 M (20 bdw)w/Nylon	24.00	0.93	0.79	20.00	Smooth	540 Spinerger	Large Wheel	Black
10-2407820-BMNN-2	NN 24-078 M (20) Nylon (HR)	24.00	0.93	0.79	20.00	Smooth	540 Sun	Large Wheel	Black
10-2410083-BMNN-2	NN 24-100 M (HR)	24.00	1.06	0.83	21.20	Smooth	540 Sun	Large Wheel	Black
10-2410082-BMNN	NN 24-100 M Nylon Cord	24.00	1.06	0.82	21.00	Smooth	540 Sun	Large Wheel	Black
10-2410086-BMNN	NN24-100 MW Nylon String	24.00	1.14	0.86	21.90	Smooth	540 Sun	Large Wheel	Black
10-2410086-BMNN-2	NN24-100 MW Nylon String (HR)	24.00	1.14	0.86	21.90	Smooth	540 Sun	Large Wheel	Black
10-2407818-BMP	P 24-078 M (18)	24.00	0.93	0.70	18.00	Smooth	540 Spinerger	Large Wheel	Black
10-2407820-BMP	P 24-078 M (20 bdw)	24.00	0.93	0.79	20.00	Smooth	540 Spinerger	Large Wheel	Black
10-2410082-BM	P 24-100 M	24.00	1.04	0.82	21.00	Smooth	540 Sun	Large Wheel	Black
10-2410083-BM	P 24-100 M	24.00	1.04	0.83	21.00	Smooth	540 Sun	Large Wheel	Black
10-24100125-MA	P 24-100 MAKO ALBER	24.00	1.04	1.25	31.70	Smooth	Alber	Large Wheel	Black
10-2410086-BM	P 24-100 MW	24.00	1.13	0.86	21.90	Smooth	540 Sun	Large Wheel	Black
10-2407818-BMPN	PN 24-078 M (18) w/ Nylon	24.00	0.93	0.70	18.00	Smooth	559 Spinerger	Large Wheel	Black
10-2407820-BMPN	PN 24-078 M (20) w/ Nylon	24.00	0.93	0.79	20.00	Smooth	559 Spinerger	Large Wheel	Black
10-2407820-BMPN-2	PN 24-078 M (20) w/ Nylon(HR)	24.00	0.93	0.79	20.00	Smooth	559 Spinerger	Large Wheel	Black
10-2410083-BMPN	PN 24-100 M	24.00	1.04	0.83	21.10	Smooth	559 Spinerger	Large Wheel	Black
10-2410083-BMPN-2	PN 24-100 M MAKO (HR)	24.00	1.04	0.83	21.10	Smooth	559 Spinerger	Large Wheel	Black
10-24078086-BP	Q 24-078 P	24.00	0.86	0.59	15.00	Smooth	540 Sun	Large Wheel	Black
10-24100113-BP	Q 24-100 P	24.00	1.13	0.77	19.50	Smooth	540 Sun	Large Wheel	Black
10-24138079-BD	Q 24-138 D	24.00	1.18	0.79	2.00	Diamond	540 Sun	Large Wheel	Black
10-24138087-BK	Q 24-138 K	24.00	1.29	0.87	2.30	Knobby	Sun/Comp	Large Wheel	Black
10-2410083-BP	U 24-100 PE	24.00	1.11	0.83	21.10	Smooth	E&J	Large Wheel	Black
10-2410090-BP	V 24-100 PI	24.00	1.12	0.90	23.00	Smooth	Invacare	Large Wheel	Black

All tires are non-marking. Available in black or gray.